

CUSTOM ARCHITECTURAL SIGNAGE CATALOG 2026

# Hotel Room Numbers, Door Plaques, Address Signs & CNC-Carved Relief Plaques

Factory-backed export service for overseas buyers who need custom signs, reliable specification review, and direct production communication.

Hotels

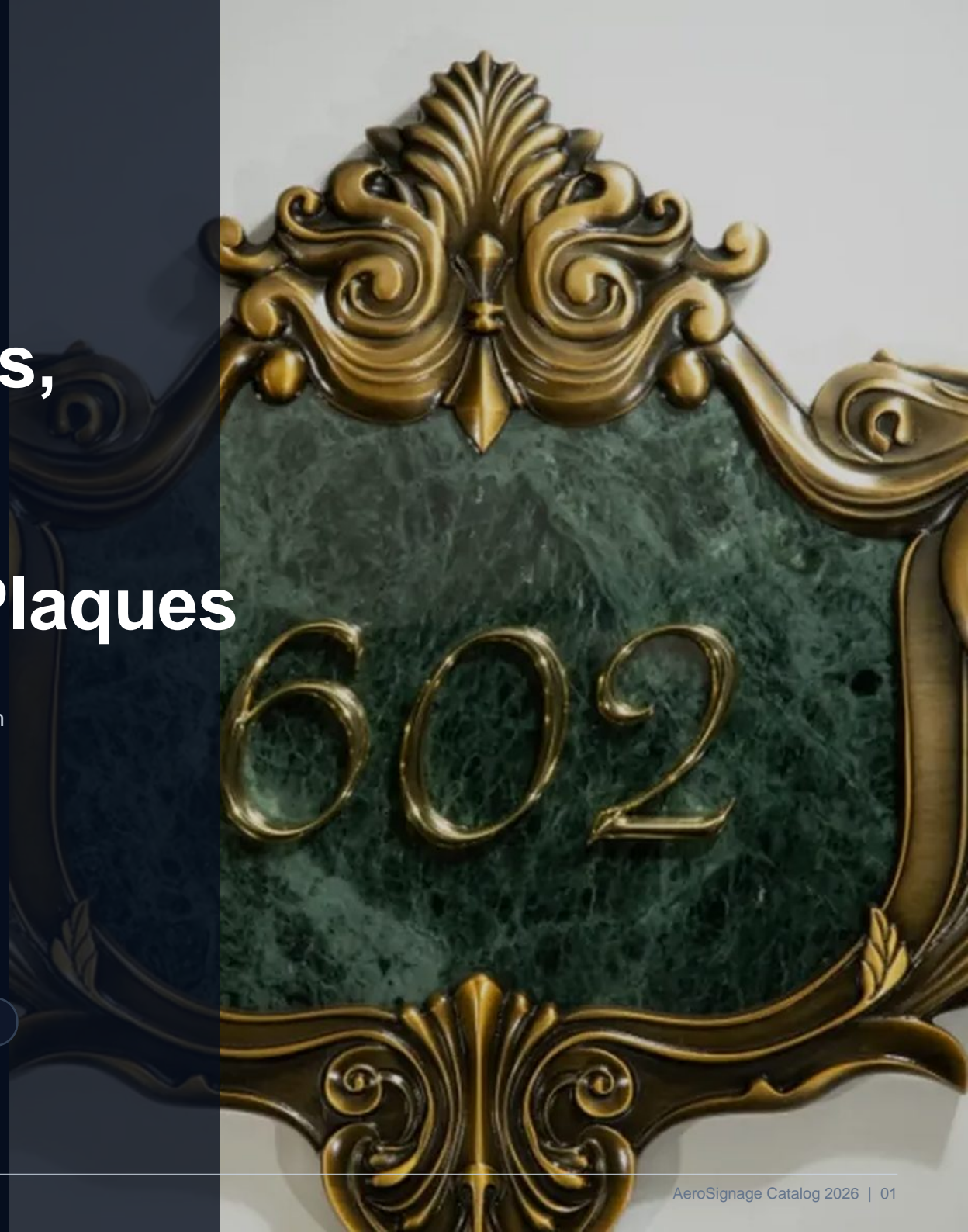
Apartments

Villas

Restaurants

Retail Interiors

Office Wayfinding



FACTORY-BACKED EXPORT SERVICE

# AeroSignage is the export-facing brand for custom architectural signage.

We help overseas buyers translate drawings, room schedules, finish references, and quantities into production-ready custom signage. The public brand is AeroSignage; manufacturing facts come from an affiliated production base and are used only to support buyer confidence.



**Since 1993**

Manufacturing origin in source files

**15,000 m2**

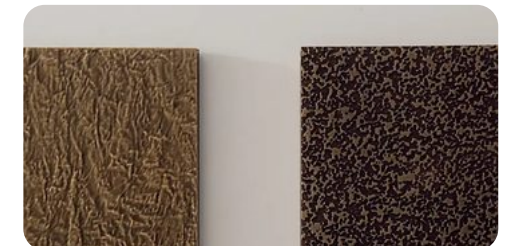
Production base with workshop areas

**200+**

Machines, including 160+ CNC units



- CNC relief carving, laser cutting, laser marking, polishing, UV printing, oxidation, spray painting, brushing, plating, and assembly.
- Standard references can be combined with custom sizes, numbering, finishes, and project-specific artwork.
- No certification, review, or client endorsement is claimed unless separately documented for a specific order.



ROOM NUMBERS / DOOR PLAQUES / APARTMENTS

# Hotel Room Number Signs

Boutique room-number systems for hotels, serviced apartments, villas, resorts, clubs, and premium residential projects.

## Typical buyer options

- Custom numbers, room schedules, colors, sizes, and mounting.
- Metal, acrylic, ceramic, stone, and mixed-material directions.
- Lighting, doorbell modules, layered builds, and finish matching on selected designs.



Illuminated room number module



Ceramic and polished number detail



Wall-mounted boutique door sign



Raised metal number close-up

## WHAT TO SEND FOR A QUOTE

Product reference, size, thickness, quantity, numbering schedule, installation surface, finish target, and artwork files.

OUTDOOR ADDRESSES / VILLAS / ENTRANCES

# Exterior Address & Villa Plaques

Decorative address plaques and exterior entrance signs with raised numbers, carved borders, and weather-aware finish choices.

## Typical buyer options

- Raised address numbers, street names, borders, and decorative patterns.
- Antique bronze, oxidized, stone, ceramic, resin, and metal-effect looks.
- Suitable for villas, premium residences, garden walls, and exterior entrances.



Decorative address plaque



Colored exterior number plaque



Antique raised lettering detail



Arched villa entrance plaque

### WHAT TO SEND FOR A QUOTE

Product reference, size, thickness, quantity, numbering schedule, installation surface, finish target, and artwork files.

CNC RELIEF / ORNATE BORDERS / PREMIUM FINISHES

# Custom Carved Relief Plaques

High-end carved plaques with raised relief borders, spherical characters, brass-tone finishes, stone inserts, and antique patina effects.

## Typical buyer options

- CNC relief carving starts from flat material and is cut path by path.
- Border pattern, lettering depth, surface texture, and finish can be customized.
- Useful for hotel doors, villas, restaurants, boutique interiors, and decorative room signs.



Ornate carved room plaque



Green stone-style insert with raised number



Relief border and texture detail



Crest-style carved sample detail

### WHAT TO SEND FOR A QUOTE

Product reference, size, thickness, quantity, numbering schedule, installation surface, finish target, and artwork files.

RESTROOM / DIRECTIONAL / INTERIOR GUIDANCE

# Restroom & Interior Wayfinding Signs

Small-format wayfinding signs for restaurants, hotels, clubs, offices, retail interiors, and amenity spaces.

## Typical buyer options

- Custom pictograms, color systems, wall plates, bracket signs, and door signs.
- Acrylic faces, UV printing, raised graphics, and illuminated options.
- Can be coordinated with room-number, floor, and directional sign programs.



Minimal restroom icon set



Illuminated restroom sign



Stair and level guidance



Facility direction plates

### WHAT TO SEND FOR A QUOTE

Product reference, size, thickness, quantity, numbering schedule, installation surface, finish target, and artwork files.

CUSTOM NUMBERS / 3D LETTERS / MODULAR COMBINATIONS

# Dimensional Numbers & Letters

Carved, polished, plated, painted, or filled numbers and letters for doors, floors, villas, mail areas, and directional systems.

## Typical buyer options

- Individual numbers can be combined for many room schedules and address formats.
- Spherical polish, sharp-angle carving, paint fill, plating, or custom color.
- Good for buyers who need flexible numbering and repeatable style families.

### WHAT TO SEND FOR A QUOTE

Product reference, size, thickness, quantity, numbering schedule, installation surface, finish target, and artwork files.



Custom decorative number plate



Polished number detail



Raised number close-up



Gold modular number set

FINISH DIRECTION BEFORE SAMPLING

# Surface treatments make the sign feel custom, not generic.

Buyers usually start with a style reference, then confirm base material, surface texture, color direction, thickness, mounting, and whether the sign will be installed indoors or outdoors.



### Aged bronze

Red bronze, yellow bronze, green bronze, or mixed antique effects.

### Polished metal

Gold, silver, chrome, brass-effect, spherical polish, or plated looks.

### Paint and UV

Solid colors, printed graphics, pictograms, patterns, and detail layers.

### Texture and relief

Raised borders, carved backgrounds, brushed direction, stone inserts, and resin details.

FROM DRAWING TO SHIPMENT

# A practical RFQ flow for custom architectural signs.

Every custom order starts with enough information for material review and production path planning. For complex carved plaques, the carving effect depends on the CNC path file, relief depth, cutter route, and finish direction.



## 01 Artwork and size confirmation

CDR, PDF, AI, SVG, DWG, PNG, JPG, or ZIP files; quantity, size, thickness, and reference style.

## 02 Programming and CNC path

Flat material is cut path by path with vertical milling tools to create relief, borders, grooves, and raised characters.

## 03 Finishing and assembly

Grinding, polishing, painting, aging, oxidation, UV printing, plating, brushing, lighting, or layered assembly.

## 04 Review before shipment

Photos, finish confirmation, assembly check, lighting test when needed, and packing confirmation can be requested.

### Catalog note

Images are representative production samples and workshop references. Final construction depends on the approved drawing, material, finish, and order-specific review.

READY TO PRICE A PROJECT

# Send your drawings, quantity and finish direction for review.

A complete request helps the project team check material options, CNC carving route, surface finish, assembly needs, packing risk, and export communication faster.

## RFQ checklist

- Product reference or catalog page
- Overall size, thickness, quantity, and numbering schedule
- Indoor or outdoor use and mounting surface
- Material target and finish sample or color reference
- Artwork files: CDR, PDF, AI, SVG, DWG, PNG, JPG, or ZIP
- Lighting, doorbell, acrylic bending, layered assembly, or packing requirements



## AeroSignage Project Desk

Email: [support@aerosignage.com](mailto:support@aerosignage.com)

WhatsApp: +86 188 7087 7669

Website: [aerosignage.com](http://aerosignage.com)